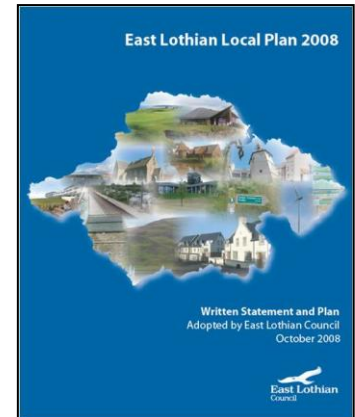
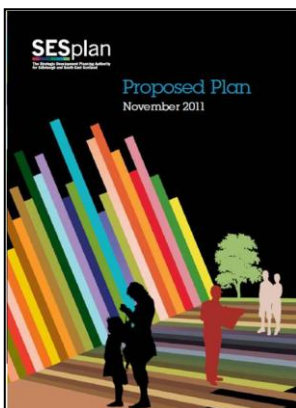


We are working on a new East Lothian Local Development Plan, **ELLDP_{one}**. This will be a new land-use plan that will eventually replace the existing East Lothian Local Plan 2008 and will set the context for planning decisions in the years to come.

This is the second in a series of newsletters that will provide updates on the progress of our new LDP and how you can be involved. If you would like to make any comments, including suggestions for future newsletters, please email us at localplan@eastlothian.gov.uk or phone 01620 827017.



Strategic Development Plan (SESplan) update



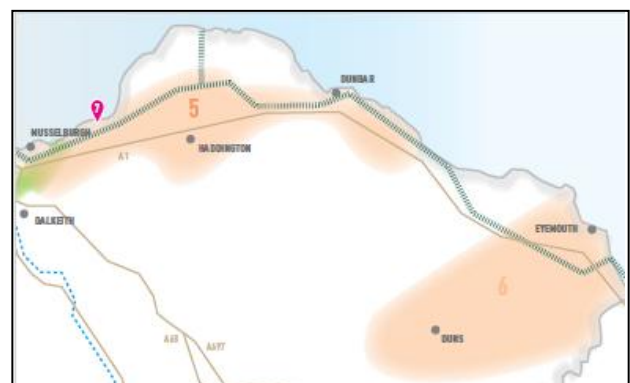
Scottish Ministers approved the Strategic Development Plan for South East Scotland (known as SESplan) in June 2013. In doing so they made various modifications to the Proposed Plan. The final approved document will be available soon on the SESplan website (www.sesplan.gov.uk).

East Lothian's LDP will have to conform to the approved Strategic Development Plan (SDP). SESplan includes an overall housing requirement across the SESplan area of 74,835 new homes to be provided between 2009 and 2019, and a further 32,710 new homes between 2019 and 2024.

However, SESplan unfortunately does not indicate how this housing requirement should be distributed across the SESplan area. Further work will now need to be undertaken to produce Supplementary Guidance that will set the housing requirement that each individual local authority in the area must provide for in its own Local Development Plan. This is to be finalised by June 2014.

It therefore remains uncertain how much housing land the East Lothian LDP will need to allocate. The overall strategy is unchanged and involves concentrating strategic development in the East Lothian 'Strategic Development Area', which broadly follows the transport corridor of the A1 and East Coast Main Line.

SESplan requires the East Lothian LDP to support the delivery of 76 hectares of strategic employment land, ensuring there is a range and choice of 'marketable' sites.



National planning policy update

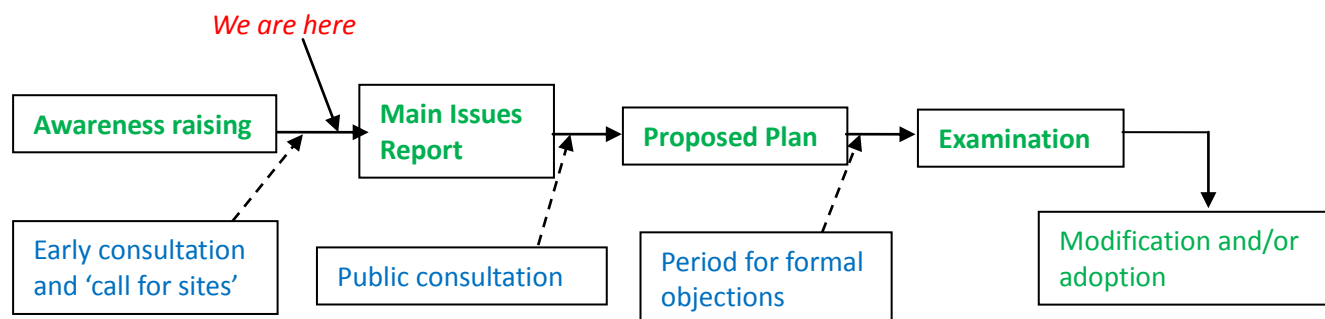
The Scottish Government recently consulted on two key documents: a revised **Scottish Planning Policy** (SPP) and a Main Issues Report for the third **National Planning Framework** (NPF3). SPP sets out the Government's policy on nationally important planning matters, while the NPF sets out the Government's strategy for Scotland's long-term spatial development, including designation of 'national developments'.

The final SPP is expected to be published in early 2014, while NPF3 is anticipated in summer 2014. Both documents are likely to have implications for the policies and proposals within East Lothian's Local Development Plan.

ELLDP_{one} – what happens next?

We are working on the Local Development Plan's **Main Issues Report**. This will set out our preferred strategy for development in East Lothian, including where development should and should not happen. It will identify any reasonable alternatives to our preferred approach, and invite comments on these options.

The exact timing of the Main Issues Report depends on progress with SESplan's Supplementary Guidance (see above), which will declare how much land we might need to allocate for housing. However, we do wish to publish a Main Issues Report as soon as possible. Our expectation is currently that this will be in **late 2013**.



The Main Issues Report will be published for public consultation for a period of at least six weeks. We will publicise the dates of this consultation period once they are finalised. We also plan to hold a series of events across East Lothian to help explain the Main Issues Report and gather people's views. Full details will be made available on the Council's Consultation Hub - <https://eastlothianconsultations.co.uk/>

You can find more detailed information on the process of development plan preparation in the Scottish Government's *Planning Circular 1/2009: Development Planning* at www.scotland.gov.uk/Publications/2009/02/13153723/0.

Keeping up to date

If you have received this newsletter from us by email you are on our consultation database. Please forward it to others who may be interested and invite them to sign up to receive future updates via www.eastlothian.gov.uk/ldp.